



上海中钛有色金属有限公司

Sino Titanium & Alloy Co.Ltd;

地址: 上海市翔殷路 1128 沪东金融大厦 14B1

Address: Room 14B1, No.1128, Xiangyin Road, Hu Dong Finance Building, Shanghai, 200433 P.R.China.

Post code: 200433

Tel: 0086-21-65976800

Fax: 0086-21-65976799

E-mail: Hunter@SinoTitaniumAlloy.com

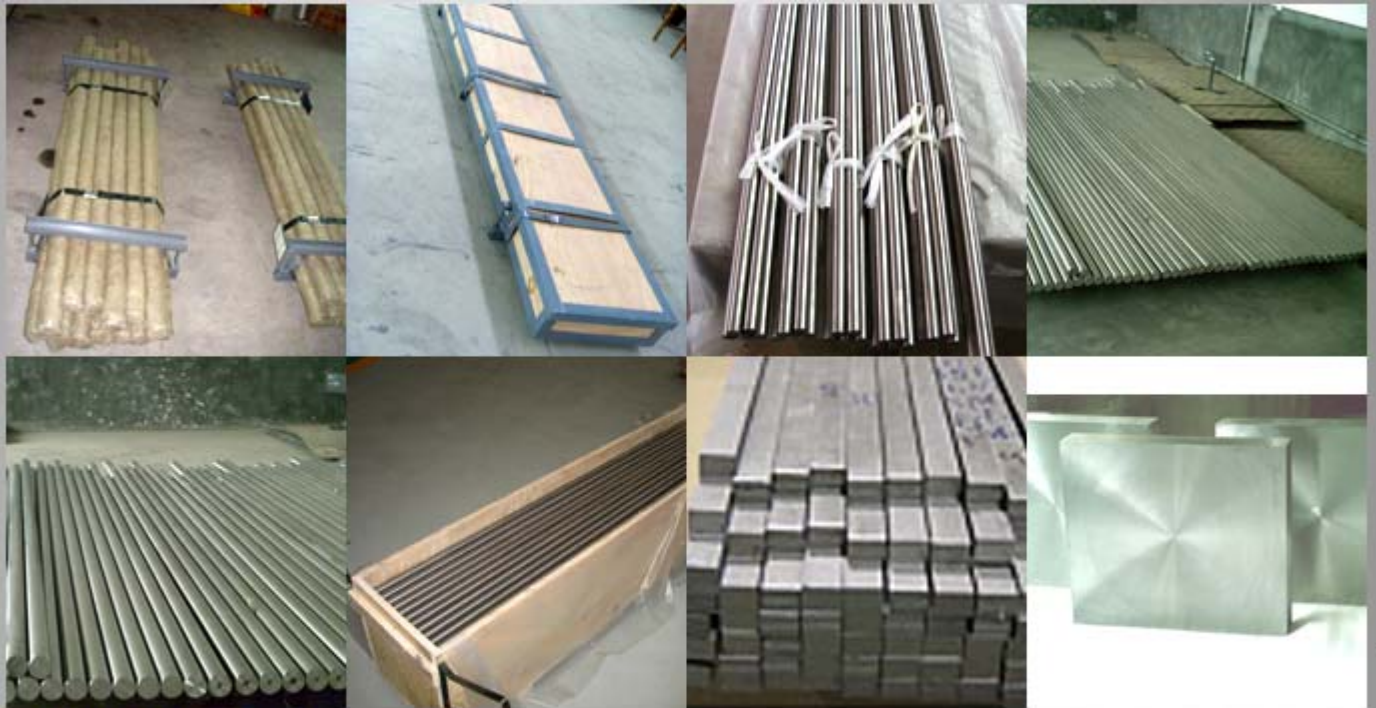
Http: www.SinoTitaniumAlloy.com

Titanium Ingots/Slabs



Alloy	Standards
GR. 1, GR. 2, GR. 3, GR. 4	ASTM B348, ASTM B265, ASTM F67
Ti-6Al-4V	AMS 4928, MIL-T-9046, MIL-T-9047
Ti-6Al-6V-2Sn	AMS 4911, AMS 4936, AMS 4971, AMS 4978, MIL-T-9046, MIL-T-9047
Ti-10V-2Fe-3Al	AMS 4983, AMS 4984, AMS 4986, AMS 4987
Ti-15V-3Al-3Cr-3Cn	AMS 4914
Ti-6Al-2Sn-4Zr-6Mo	AMS 4981, MIL-T-9047
Ti-6Al-7Nb (IMI367)	ASTM F 1295
Ti-8Al-1Mo-1V	AMS 4915, AMS 4916, AMS 4972, AMS 4973, MIL-T-9046, MIL-T-9047
Ti-6Al-2Sn-4Zr-3Mo	AMS 4919, AMS 4975, AMS 4976

Titanium Billets/Bars



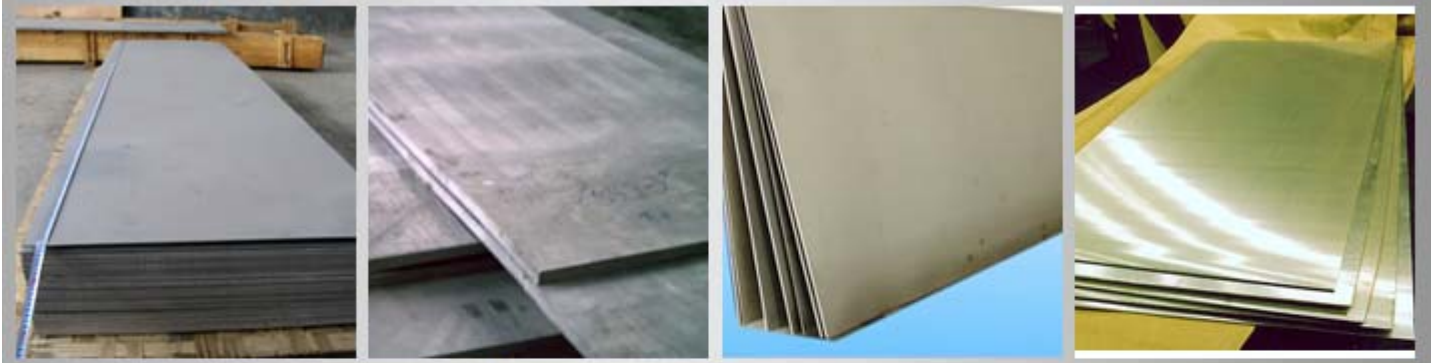
Titanium Round Bar

Alloy	Standards
GR. 1, GR. 2, GR. 3, GR. 4, T40, 3.7024.1, 3.7064.1	ASTM B348, ASTM F 67, ISO5832/2, ASME SB348, WL3.7024, WL3.7034, WL3.7064
GR. 7, GR. 23, 6AL4V ELI	ASTM B348, ASTM F136, AMS 4930, ASME SB348
GR. 9	ASTM B348, ASME SB348
GR. 5, 3.7164.1, 3.7165.1, 6AL4V	ASTM B 348, WL3.7164/2, ISO5832/3, AMS 4928, ASTM F 1472, ASME SB348, MIL-T-9047
6AL7Nb	ASTM F1295, ISO5832/11
6AL-6V-2Sn	AMS 4971, AMS 4978, MIL-T-9047

Titanium Flat Bar

Alloy	Standards
GR. 1, GR. 2, GR. 3, GR. 4, GR. 7, GR. 12, GR. 23, T40, 3.7024.1, 3.7064.1	ASTM B348, ASTM F67, ASTM B265, ISO5832/2, ASME SB348, WL3.7024, WL3.7034, WL3.7064
6AL4V ELI	ASTM B265, ASTM F136, MIL-T-9046, AMS 4905, AMS 4907
GR. 9	ASTM B348, ASME SB348
GR. 5, 3.7164.1, 3.7165.1, 6AL4V, TA6V	ASTM B 348, WL3.7164/2, ISO5832/3, AMS 4928, ASTM F 1472, ASME SB348, MIL-T-9047, MIL-T-9046, AMS4911
6AL7Nb	ASTM F1295, ISO5832/11
6AL-6V-2Sn	AMS 4971, AMS 4978, MIL-T-9047

Titanium Plates/Sheets



Alloy	Standards		
GR. 1, GR. 2, GR. 3, GR. 4, GR. 7, GR. 12, GR. 23	ASTM B265		
6AL4V	MIL-T-9046, AMS 4911		
6AL4V ELI	ASTM F136, MIL-T-9046, AMS 4905, AMS 4907		
Alloy	Size (MM)		
GR. 1, GR. 2, GR. 3, GR. 4, GR. 7, GR. 12, GR. 23, 6AL4V	Thickness	Width	Length
	0.80-6.35	600-1050	≤3048
	6.35-40.00	600-3000	≤4000

Titanium tubes



MT(mm) \ DIA(mm)	DIA(mm)									
	>0.3-0.4	>0.4-0.6	>0.6-0.8	>0.8-1.0	>1.0-1.4	>1.4-1.8	>1.8-2.4	>2.4-3.2	>3.2-4.5	
>10~15										
>15~20										
>20~25										
>25~30										
>30~35										
>35~40										
>40~50										
>50~60										
>60~80										

Available Grades	GR 1	GR 2	GR 3	GR 7	GR 9	GR 11	GR 12	GR 16	GR 17
------------------	------	------	------	------	------	-------	-------	-------	-------

Standards : ASTM B338, ASME SB338

DIA(mm)	DIA(mm)													
	>0.2-0.3	>0.3-0.4	>0.4-0.6	>0.6-0.8	>0.8-1.0	>1.0-1.2	>1.2-1.5	>1.5-1.8	>1.8-2.2	>2.2-2.7	>2.7-3.2	>3.2-3.8	>3.8-4.5	>4.5
3~5														
>5~10														
>10~15														
>15~20														
>20~32														
>32~42														
>42~52														
>52~65														
>65~85														
>85~100														
>100~110														
>110~130														

Available Grades	GR 1	GR 2	GR 3	GR 7	GR 9	GR 11	GR 12	GR 16	GR 17
------------------	------	------	------	------	------	-------	-------	-------	-------

Standards : ASTM B337, ASTM B861, ASME SB337, ASME SB861.

Titanium Wire



Alloy	Standards	Size
GR. 1, GR. 2, GR. 3, GR. 4, GR. 5, GR. 7, GR. 12, GR. 23 TI-6AL-4V	AWS. A5. 16, AMS, ISO5832	0.1-6.0 X spool or fixed length

Titanium Powder



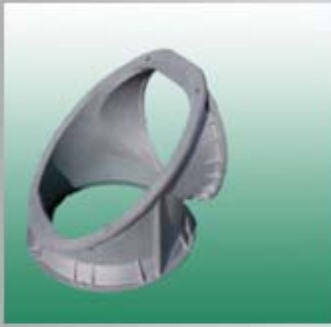
Grade	Ti ≥%	Chemical ingredients (≤%)										
		H	O	N	Cl	C	Si	Fe	Mg	Mn	Al	V
Special FTi-1	99.5	0.02	0.25	0.02	0.05	0.02	0.02	0.07	0.06	0.01		
Special FTi-2	99.4	0.03	0.30	0.03	0.05	0.02	0.02	0.08	0.07	0.01		
Special FTi-3	99.2	0.04	0.40	0.04	0.06	0.03	0.02	0.09	0.08	0.02		
Special FTi-4	99.0	0.05	0.45	0.05	0.06	0.04	0.03	0.12	0.09	0.03		
FTi-1	98.0	0.08	0.50	0.05	0.06	0.05	0.04	0.15	0.12	0.04	0.6	0.2
FTi-2	97.0	0.30	0.60	0.06	0.06	0.07	0.05	0.20	0.15	0.04	1.0	0.4
FTi-3	96.0	0.40	0.80	0.06	0.06	0.08	0.05	0.25	0.16	0.05	1.5	0.6
FTi-4	95.0	0.50	0.90	0.06	0.06	0.09	0.06	0.30	0.18	0.05	2.2	0.8

Product name: metal titanium powder, UN No. 2546 or 2878

Granularity: -20mesh, -40mesh, -60mesh, -100mesh, -160mesh, -200mesh, -260mesh, -32mesh, -400mesh

Packing: φ310mm or φ480mm, H400mm or H900mm steel drum barrel, plastic bag lined steel barrel with a package volume of 50kg or 250kg, with national awarded dangerous packing performance permit and dangerous packing use permit.

Titanium Forging



Tee Valve



Structural Forging



Ti Discs



Structural Forging



Ti alloy inducing wheel of liquid hydrogen pump



Ti alloy frame of artificial satellite



Ti alloy Rudder frame



Ti alloy pumps



Open Impeller



Back Axle



Structural Forging



Ti Rings

Titanium Fasteners

	<p>Standards : ANSI B16.9 GB/T12459 GB/T13401 SH3408-96 SH3409-96</p> <p>Material : 304, 304L, 316L, 321, 347</p> <p>Diameter : 1/2' -48'</p>
PIPE CAP	
	<p>Standards : ANSI B16.9 GB/T12459 GB/T13401 SH3408-96 SH3409-96</p> <p>Material : 304, 304L, 316L, 321, 347</p> <p>Diameter : 1/2' -48'</p>
ELB45LR	
	<p>Standards : ANSI B16.9 GB/T12459 GB/T13401 SH3408-96 SH3409-96</p> <p>Material : 304, 304L, 316L, 321, 347</p> <p>Diameter : 1/2' -48'</p>
ELB90LR	
	<p>Standards : ANSI B16.9 GB/T12459 GB/T13401 SH3408-96 SH3409-96</p> <p>Material : 304, 304L, 316L, 321, 347</p> <p>Diameter : 1/2' -48'</p>
ELB90LR	
	<p>Standards : ANSI B16.9-86 [MSS SP-43] [ASME] GB/T12459</p> <p>Material : 304, 304L, 316L, 321, 347</p> <p>Diameter : 1/2' -24'</p>
LAP JOINT STUB ENDS	
	<p>Standards : ANSI B16.9 GB/T12459 GB/T13401 SH3408-96 SH3409-96</p> <p>Material : 304, 304L, 316L, 321, 347</p> <p>Diameter : 1/2' -48'</p>
RED CON	



Standards : ANSI B16.9
GB/T12459 GB/T13401
SH3408-96 SH3409-96
Material : 304、304L、316L、321、347
Diameter : 1/2' -48'

RED ECC



Standards : ANSI B16.9
GB/T12459 GB/T13401
SH3408-96 SH3409-96
Material : 304、304L、316L、321、347
Diameter : 1/2' -48'

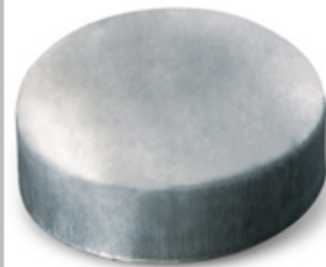
TEE



Head 01



Head 02



Head 03

Titanium Equipments

