

Name: Cold work roller

Specification: \leq DIA 960/1740*4000mm

Weight: \leq 10000kg

Material: 9CrMo/MC3a/MC3b/MC5 etc.



Productivity: 200tons/month

Packing: Wooden Case

TransTime: 15days-50days

Product Description:

Stainless Steel Flanges, Long Welding Neck Flange.

Material include: 304/304L 316/316L, F321, F51 etc.

Pressure: 150lbs-2500lbs

Size Range: 1/2" -48"



Productivity: 200tons/month

Packing: Wooden Case

TransTime: 15days-50days

Product Description:

Stainless Steel Flanges, Plate, Flat.

Material include: 304/304L 316/316L, F321, F51 etc.

Pressure: 150lbs-2500lbs

Size Range: 1/2" -48"



Productivity: 200tons/month

Packing: Wooden Case

TransTime: 15days-50days

Product Description:

Stainless Steel Flanges, Welding Neck.

Material include: 304/304L 316/316L, F321. F51 etc.

Pressure: 150lbs-2500lbs

Size Range: 1/2" -48"



Productivity: 200tons/month

Packing: Wooden Case

TransTime: 15days-50days

Product Description:

Stainless Steel Flanges, Blind with no bolt hole.

Material include: 304/304L 316/316L, F321. F51 etc.

Pressure: 150lbs-2500lbs

Size Range: 1/2" -48"



Productivity: 200tons/month

Packing: Wooden Case

TransTime: 15days-50days

Product Description:

Stainless Steel Flanges, Special.

Material include: 304/304L 316/316L, F321. F51 etc.

Pressure: 150lbs-2500lbs

Size Range: 1/2" -48"



Productivity: 200tons/month

Packing: Wooden Case

TransTime: 15days-50days

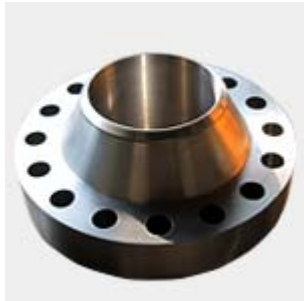
Product Description:

Stainless Steel Flanges, Long Welding Neck Flange with no bolt holes.

Material include: 304/304L 316/316L, F321, F51 etc.

Pressure: 150lbs-2500lbs

Size Range: 1/2" -48"



Productivity: 200tons/month

Packing: Wooden Case

TransTime: 15days-50days

Product Description:

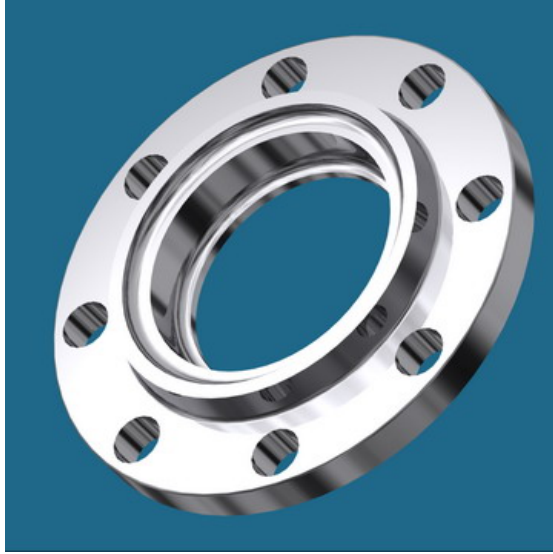
Stainless Steel Flanges, Welding Neck.

Standard: ANSI, DIN, EN1092-1, JIS.

Material include: 304/304L, 316/316L, F321, F51, 1.4401, 1.4404, 1.4301, 1.4307, 1.4541, 1.4571 etc.

Pressure: 150lbs-2500lbs

Size range; 1/2" -48"



Standard: ANSI,DIN, EN1092-1,JIS

Packing: Wooden Case

TransTime: 15days-50days

Product Description:

Stainless steel flanges,Socket Welding Flanges.

Material include: 304/304L,316/316L. F321, F51, 1.4401, 1.4404,1.4301,1.4307,1.4541.1.4571 etc.

Pressure: 150lbs-2500lbs

Size range; 1/2"-48"



Standard: ASME, DIN, En1092-1,JIS

Productivity: 200tons/month

Packing: Wooden Case

TransTime: 15days-50days

Product Description:

Stainless Steel Forged Flanges.

Standard: ASME, DIN, EN1092-1, JIS

Pressure: 150lbs-2500lbs

Size: 1/2inch - 48inch

Forming Type: Forged.



Productivity: 200TONS/MONTH

Packing: Wooden Case

TransTime: 20days-50days

Product Description:

Stainless steel rings, Special Flanges.

Material include: 304/304L, 316/316L, F321,F51, 1.4301,1.4307,1.4401,1.4404,1.4541,1.4571 etc.

Size Range: 1/2" - 48"